

AREA OF INTEREST - **C**
 SOUTH STREET PARKING AREA AND PEDESTRIAN BRIDGE

Area D: Bank Drive-Thru Parking Area

South Street Bridge

The South Street bridge offers fine views back towards the Village center and the pedestrian bridge with the Wawayanda Creek flowing rapidly under it. On the east side of this bridge is an unusual elongated tunnel that runs completely under a commercial building. This tunnel is surprisingly free of debris and is the area purported to be a good spot for fishing for suckers.

Smith Street via Bank Parking Lot

The unprecedented floods during the fall of 2011 inundated the Creek corridor and changed the Village landscape by causing the two Cablevision buildings on Smith Street adjacent to the Creek to be condemned. With removal of these buildings an opportunity opens up to have access to the Creek at Smith Street and use the attached pedestrian bridge connection here to crossover from the bank parking lot, a private parking lot leased by the Village. A pathway along the north edge of the bank parking lot could connect to the now unusable pedestrian bridge which would need to be either modified or replaced. From Smith Street going east, the pathway would follow the top of the slope to avoid steep topography above a wooded area and cross Warwick Valley Telephone and other private property before reaching Forester Avenue.



A Pedestrian Bridge at the Bank Drive-Thru Lot Would Allow Access to Creek Connections

Potential ‘Applefest Pocket Park’

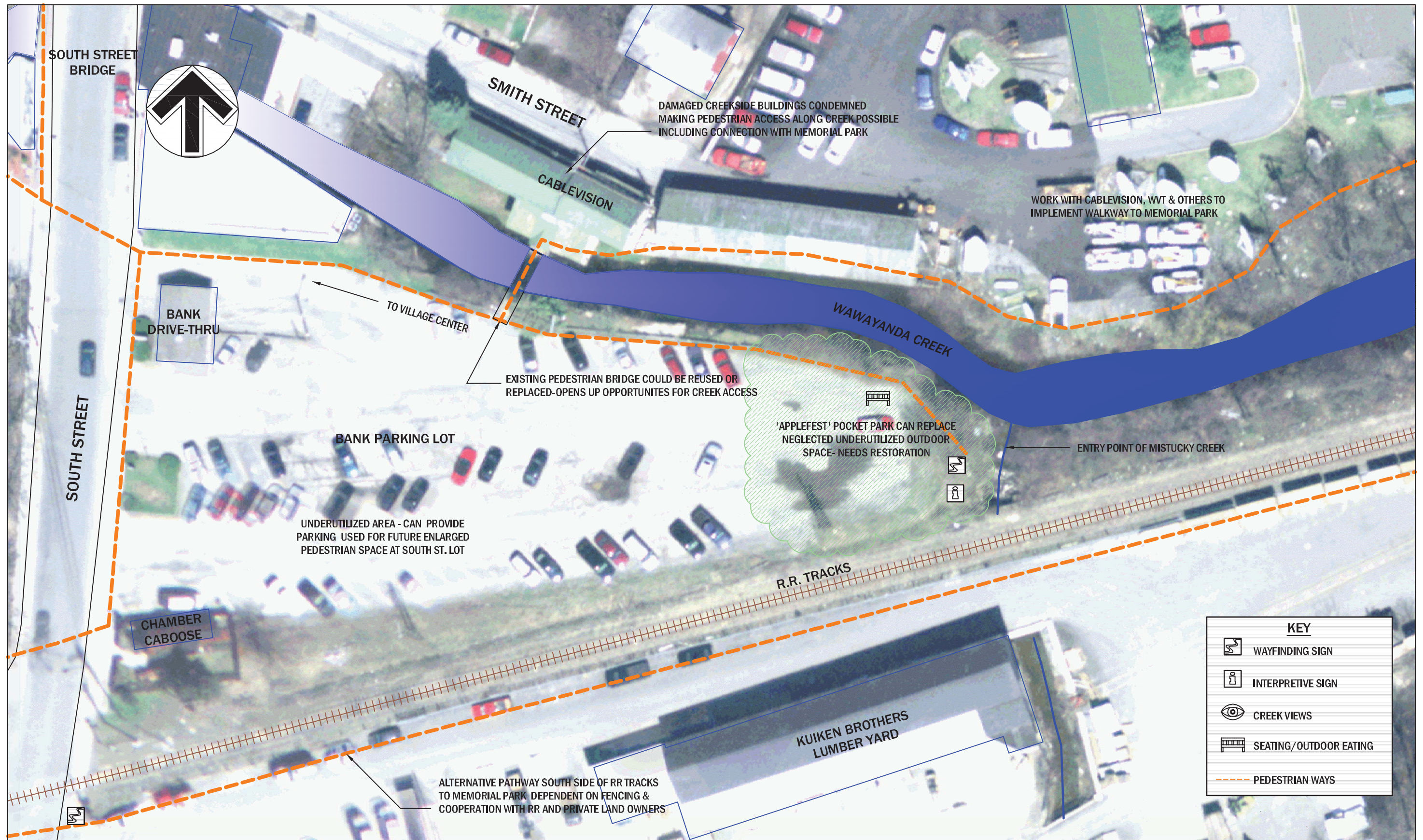
The Mistucky Creek, after flowing through Stanley Deming Park, enters the Wawayanda from under an old railroad culvert dated 1906 just at the terminus of the bank parking lot. This is a litter-strewn neglected area but could be a small open space or pocket park connected by the proposed walkway over the pedestrian bridge at Smith Street. It is a location that combines the attributes and history of the Village, Wawayanda Creek, railroad as well as the native American tribe called the Mistucky that had an encampment along the Mistucky Creek just over the Village border. Instead of an eyesore, this small area could be restored as a small park for seating or recreating that would serve the large crowds at Village events such as Applefest.

Alternative Route—Lumber Yard Drive

An alternative connection to Forester Avenue and Memorial Park runs along the north edge of the access drive to the Kuiken Lumber yard and follows the south side of the tracks. To be implemented, these routes connecting the various ‘Areas of Interest’ cross private lands and would necessitate cooperation of local property owners and the railroad. A viable pedestrian connection within close proximity of the tracks would require a separated pathway along the railroad right-of-way and could be implemented only with the railroad’s cooperation. Similar trails have been built in other communities such as Wassaic, New York, where a permanent tall fence is used as a safe barrier between the rail bed and the pathway that is primarily for bicycle and pedestrian use. Here the immediate experience of walking along the natural stream would not be available. The route does, however, connect with a potentially interesting open space area at the site of the old ‘Ice Pond’ and would serve as a link between Memorial Park and the Village center.



The Mistucky Creek Flows under the Tracks just before It Joins the Wawayanda Creek at the Terminus of the Bank Parking Lot



AREA OF INTEREST - D
BANK PARKING AREA AND LUMBER YARD

Area E: Old Ice Pond Site & Railroad Right of Way

Historic and Potential Community Interest

The Ice Pond site is of historic and environmental interest and borders on both the Mistucky and Wawayanda Creeks in the immediate area between the lumber yard and the light industrial automotive business along Forester Avenue. An aerial photograph of the area taken in 1957 shows a large pond that was historically used for ice by the Isaiah Bunn Bottle Works, as noted on the photograph, but was abandoned and eventually filled in. There is second growth forest and wetland vegetation encompassing it. The potential for this area for ecological restoration, its contribution to water quality for the Wawayanda Creek and its possible use as a connecting node for the Village center, Memorial Park and Stanley Deming Park makes it a focal point for further investigation.

Challenges Created by Railroad Right-of-Way

Environmental

Like the railroad right-of-way area in the vicinity of Mitchel Mall, this stretch of the railroad bed runs directly along the Wawayanda Creek. Its banks suffer from herbicide spraying, brush cutting and erosion. Railroad debris is most noticeable in this portion of the tracks and careening outdated electric poles, wires, railroad ties, and discarded metal objects line the tracks and Creek bank. Sewer manholes are also located within the stream banks and may be prone to flooding. Possible industrial waste may wash into the stream from the south. The Creek accumulates snags and litter in this area and stream clean-up and removal of impeding dead wood within NYS DEC regulations would be beneficial. Future study of water quality in the Creek as the basis for developing mitigation and restoration measures can be one important step towards protecting and enhancing water quality and riparian habitat within the study area.

Connectivity

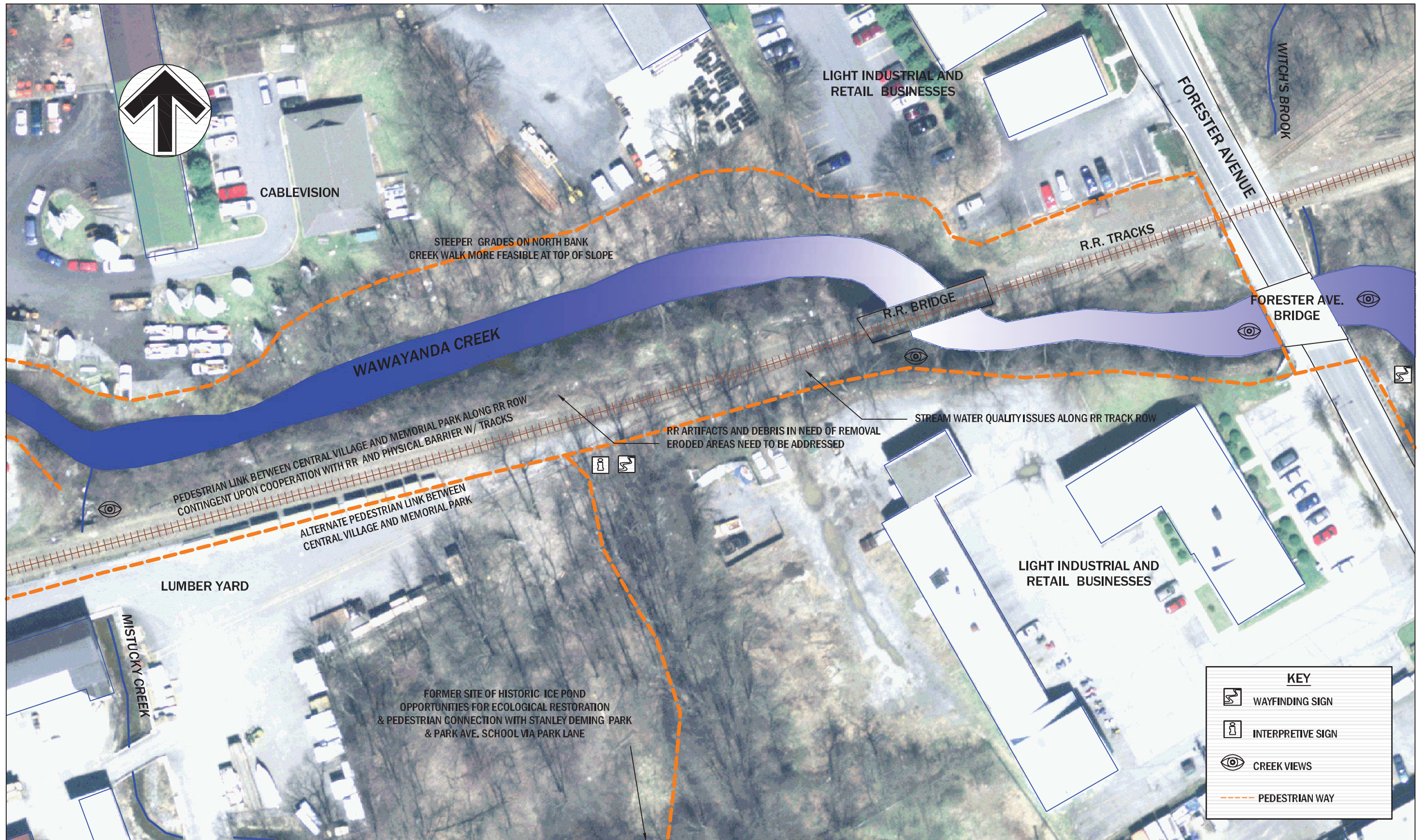
The railroad tracks leading to Forester Avenue and Memorial Park serve as the most direct pedestrian access leading from the Village center to this popular area. Making safe connections for walking is challenging here. Again, working with the railroad to create a safe pedestrian corridor or using the route north of the Creek presents viable alternatives.



Railroad Tracks Leading to Forester Avenue and Memorial Park Serve as the Main Route of Pedestrian Access from the Village Center



Removal of Trash, Snags and Discarded Railroad Materials Would Benefit This Section of the Wawayanda Creek



AREA OF INTEREST - **E**
 OLD ICE POND SITE & RR R.O.W.